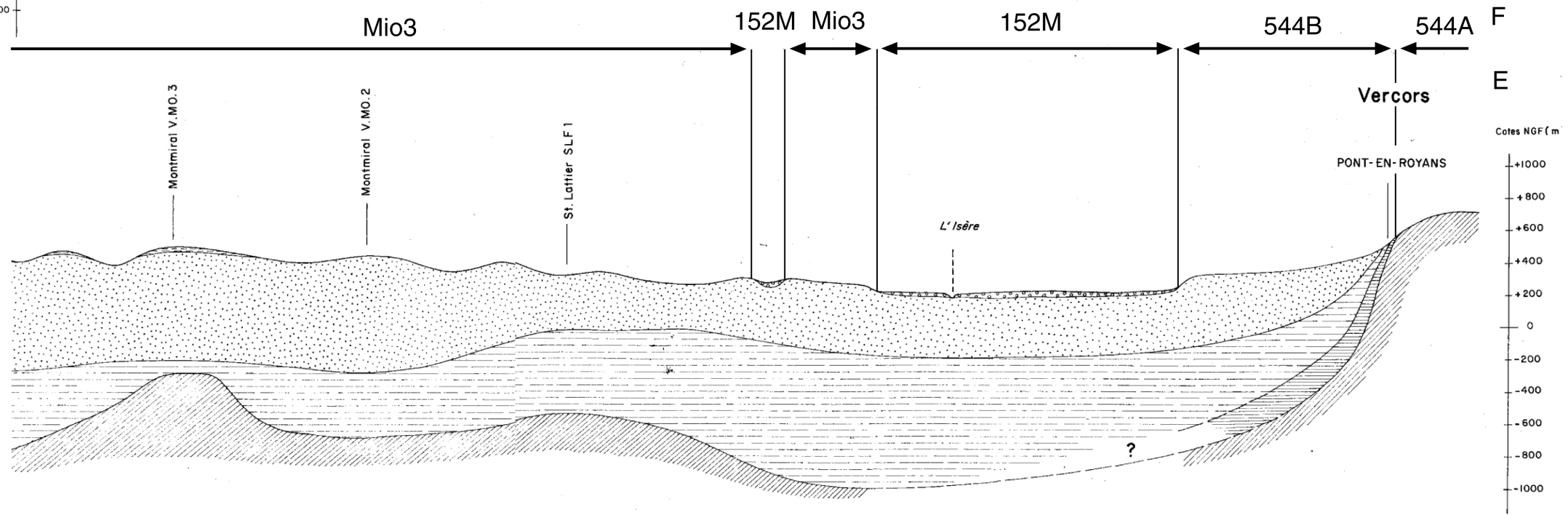
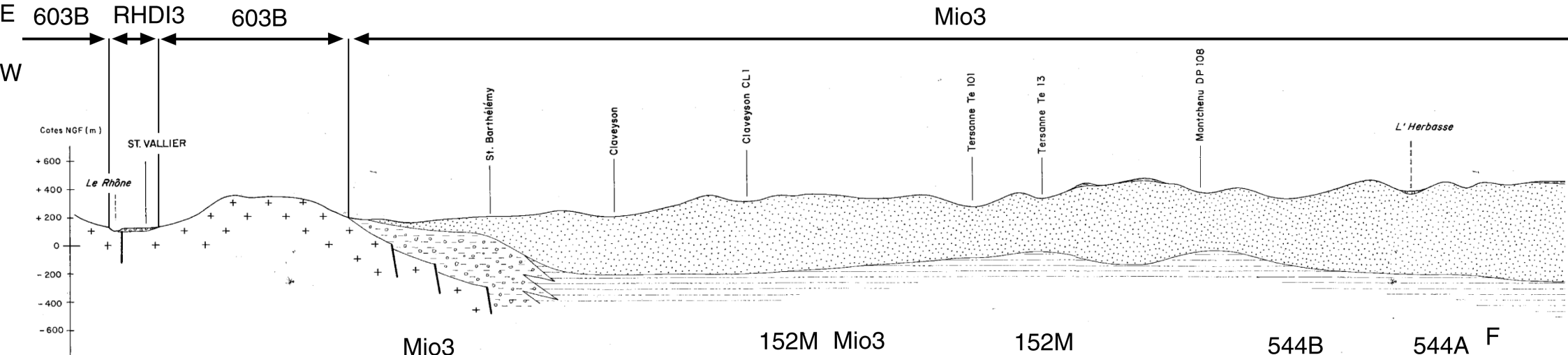
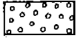

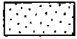

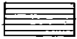

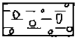
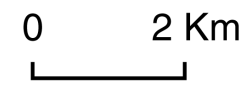


Extrait de l'Atlas des aquifères et eaux souterraines en France (2006)



-  Alluvions fluviales
-  Formation argilo-caillouteuse ("Chambaran-Bonnevaux") faciès d'altération
-  Dépôts miocènes
-  Ensemble détritique de l'Oligocène supérieur (argileux)
-  Eocène : sables siliceux kaoliniques
-  Substratum mésozoïque : calcaires
-  Dépôts détritiques de bordure (Eocène - Oligocène ?) : sables, grès, marnes gréseuses



Extrait du rapport BRGM 86 SGN 016 RHA
de A. Graillat et Y. Gouisset