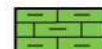
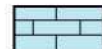

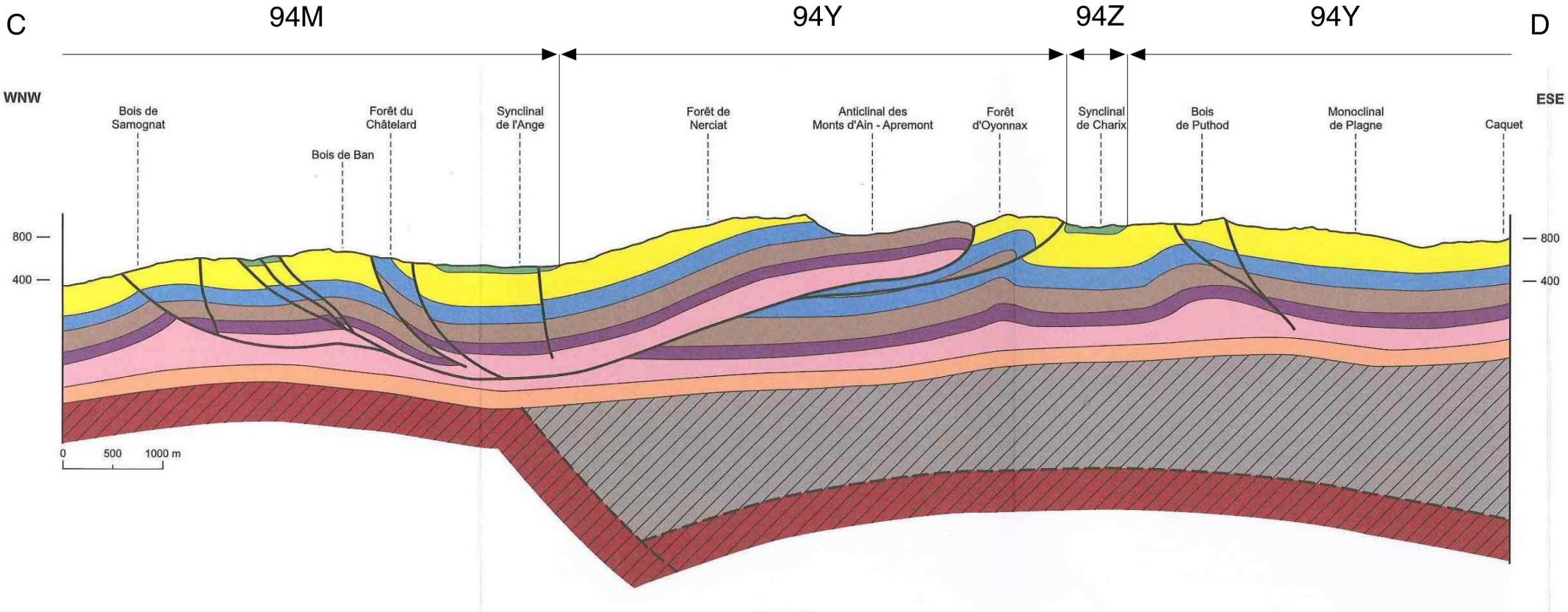




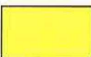






-  Eboulis anciens
-  Alluvions fluvio-glaciaires
-  Remblaiements quaternaires

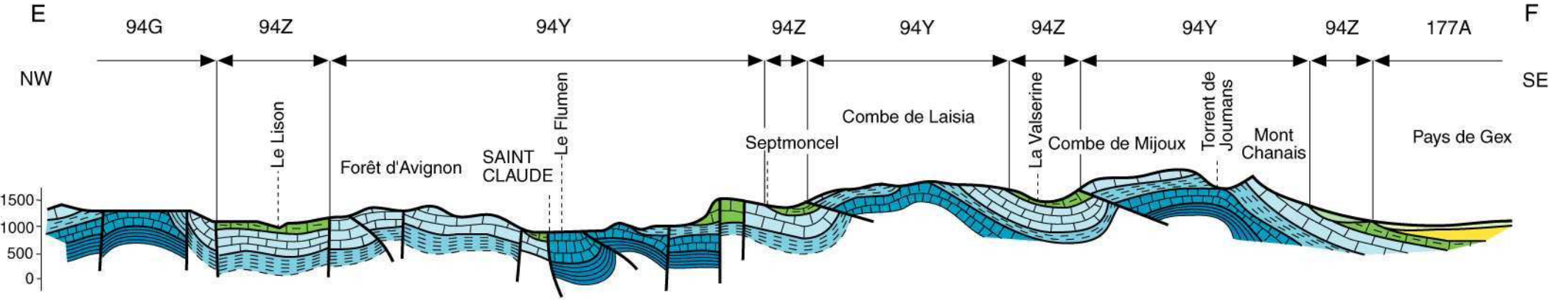
-  Marnes et calcaires du Crétacé
-  Calcaires du Jurassique supérieur
-  Calcaires marneux, marnes argoviennes et oxfordiennes

 Failles



Extrait de la notice de la carte géologique au 1/50 000 de Nantua

- | | | | |
|---|-------------------------------|---|-----------------------------|
|  | Crétacé inférieur |  | Keuper |
|  | Jurassique supérieur calcaire |  | Muschelkalk + Buntsandstein |
|  | Oxfordien marneux |  | Permo-Carbonifère |
|  | Jurassique moyen |  | Socle paléozoïque |
|  | Jurassique inférieur | | |
- NB. Il est tenu compte des variations d'épaisseur des unités entre l'ouest et l'est de la feuille.*



0 1 2 3 4km

Extrait de la carte de vulnérabilité des eaux souterraines à la pollution au 1/50 000 de St Claude

