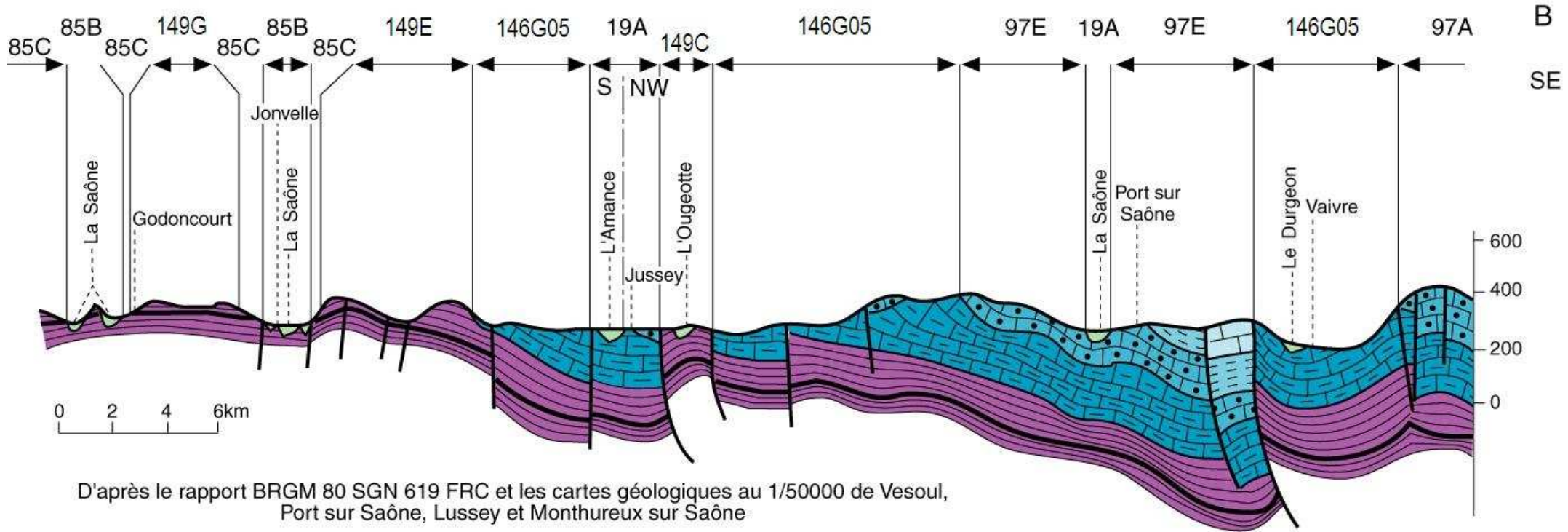
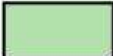








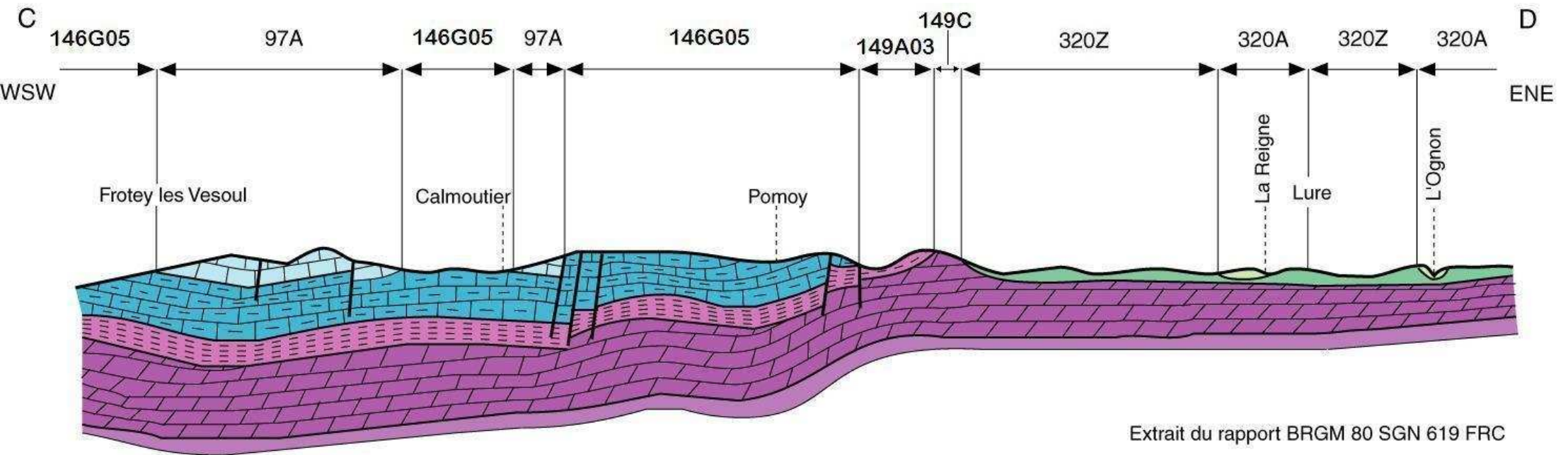
A  
N



B  
SE


D'après le rapport BRGM 80 SGN 619 FRC et les cartes géologiques au 1/50000 de Vesoul, Port sur Saône, Lussey et Monthureux sur Saône

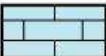
- |   |   |   |  |   |         |
|---|---|---|--|---|---------|
|  | Alluvions   |  | Calcaires oolithiques du Jurassique moyen  |  | Failles |
|  | Calcaires, calcaires oolithiques et calcaires marneux du Jurassique supérieur |  | Calcaires oolithiques, marnes, calcaires marneux et marnes en alternance du Lias |   |         |
|  | Marnes et marno-calcaires de l'Argovo-Oxfordien                               |  | Grès, marnes, dolomies et calcaires, marnes, grès du Trias                       |   |         |




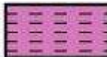
0 1 2 3km


 Alluvions modernes


 Alluvions anciennes

 Calcaires et calcaires oolithiques du Dogger

 Calcaires, marnes, schistes, marnes; calcaires marneux et marnes gréseuses du Lias

 Marnes, dolomies, grès argileux, marnes à gypse du Trias supérieur

 Calcaires, dolomies et marnes du Trias moyen

 Grès du Trias inférieur

 Failles