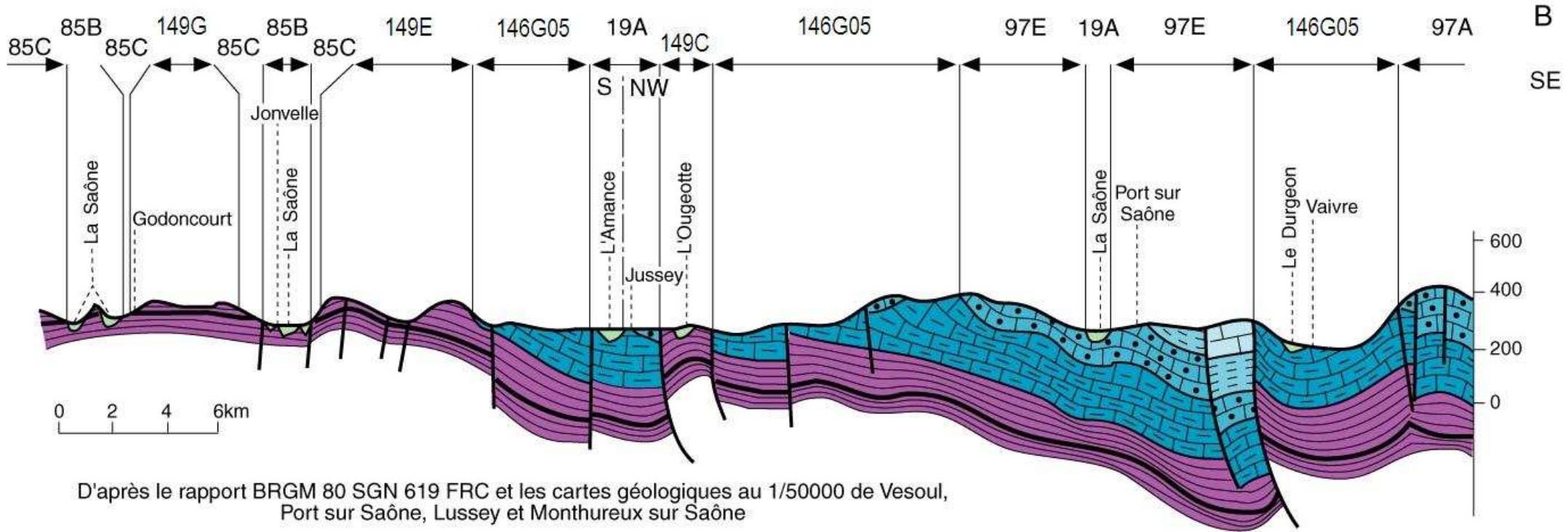
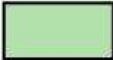








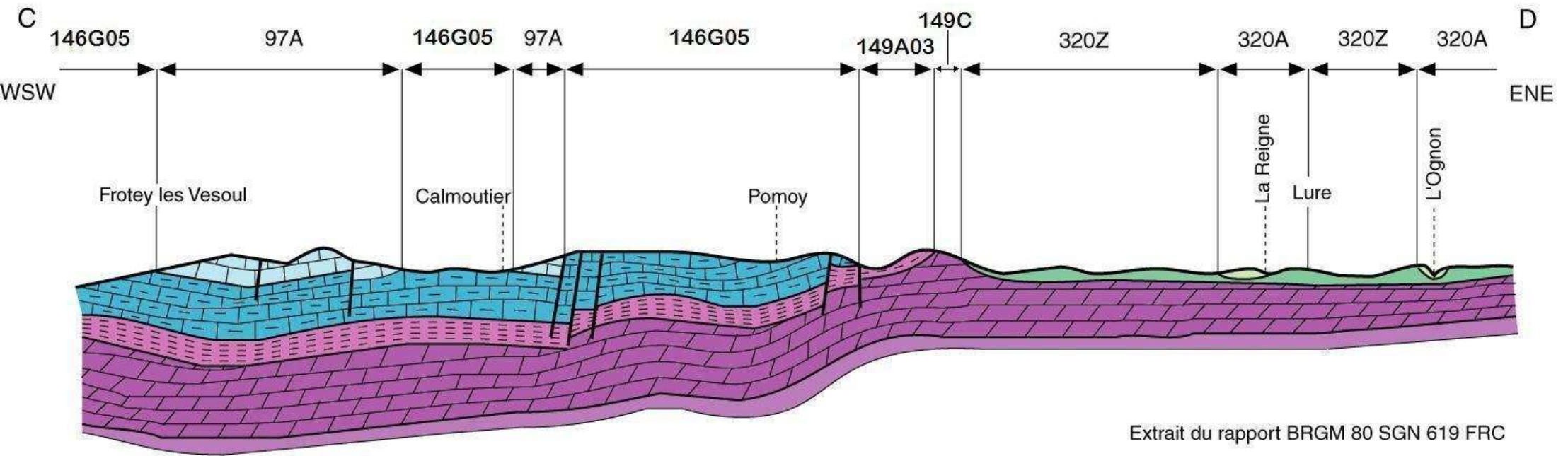
A
N



B
SE

D'après le rapport BRGM 80 SGN 619 FRC et les cartes géologiques au 1/50000 de Vesoul, Port sur Saône, Lussey et Monthureux sur Saône

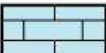
- | | | |
|-------------------------------------------------------------------------------------------------------------------------------------------------------------------|------------------------------------------------------------------------------------------------------------------------------------------------------------------------|-----------------------------------------------------------------------------------------------|
|  Alluvions |  Calcaires oolithiques du Jurassique moyen |  Failles |
|  Calcaires, calcaires oolithiques et calcaires marneux du Jurassique supérieur |  Calcaires oolithiques, marnes, calcaires marneux et marnes en alternance du Lias | |
|  Marnes et marno-calcaires de l'Argovo-Oxfordien |  Grès, marnes, dolomies et calcaires, marnes, grès du Trias | |




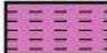
0 1 2 3km


 Alluvions modernes


 Alluvions anciennes

 Calcaires et calcaires oolithiques du Dogger

 Calcaires, marnes, schistes, marnes; calcaires marneux et marnes gréseuses du Lias

 Marnes, dolomies, grès argileux, marnes à gypse du Trias supérieur

 Calcaires, dolomies et marnes du Trias moyen

 Grès du Trias inférieur

 Failles