
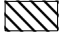



# Projets de Territoire pour la Gestion de l'Eau Bassin Rhône-Méditerranée en date du 24/06/2024

## PTGE

### Masses d'eaux souterraines





#### État d'avancement

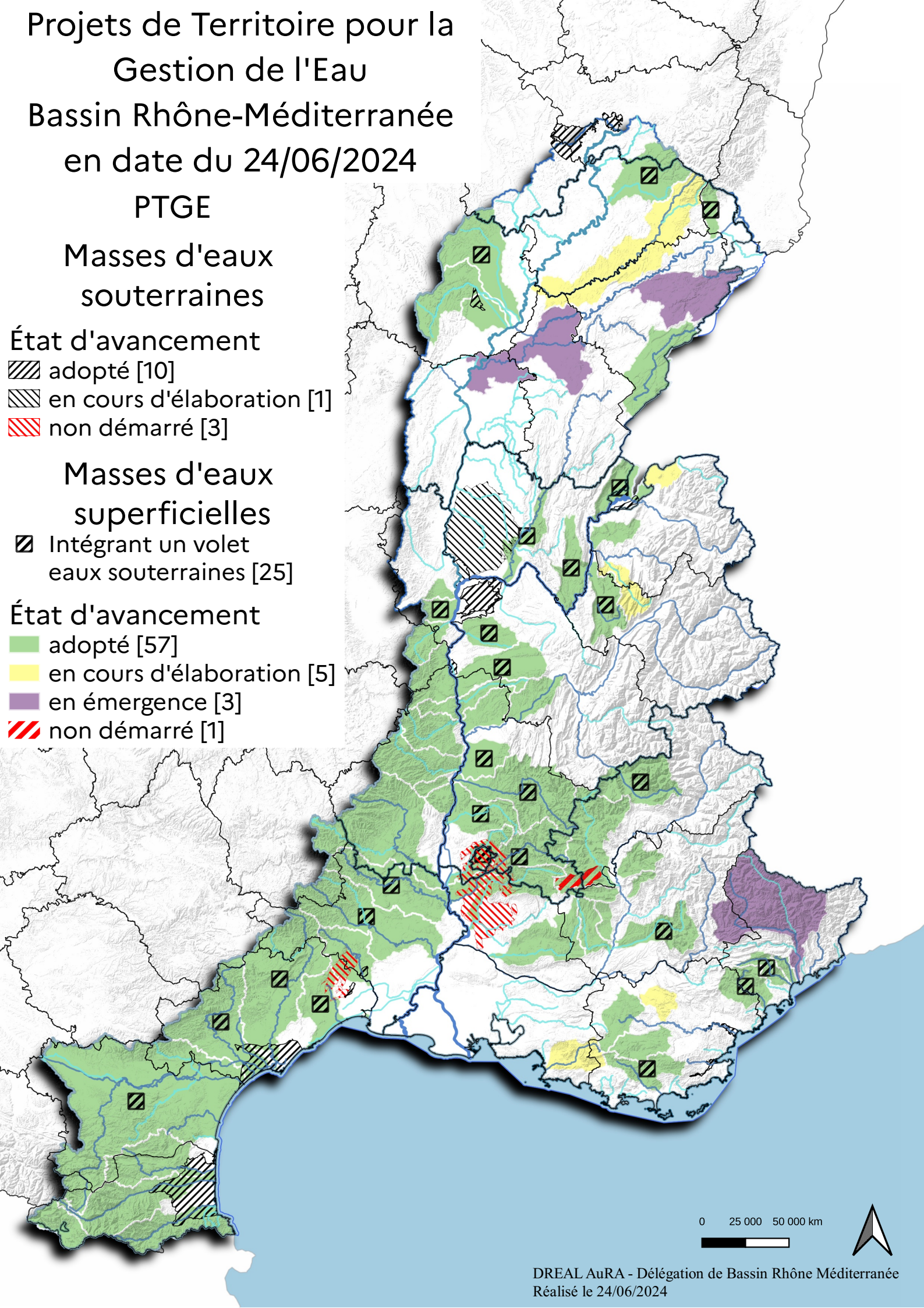
-  adopté [10]
-  en cours d'élaboration [1]
-  non démarré [3]

### Masses d'eaux superficielles

-  Intégrant un volet  
eaux souterraines [25]

#### État d'avancement

-  adopté [57]
-  en cours d'élaboration [5]
-  en émergence [3]
-  non démarré [1]



0 25 000 50 000 km

